

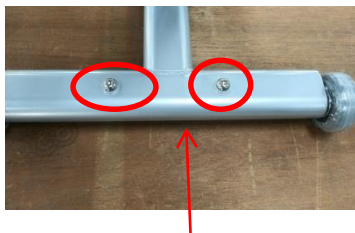
SP-1100 + SC-1100 – How to Assemble

1. Parts for connection

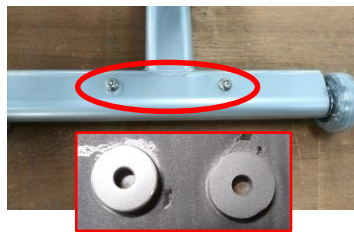
Parts	Bolt(8*75 mm)	Spanner (13mm)	Wrench (6mm)	Washer(10mm)	Nuts(φ8)	Washer(36 mm)
Q'ty	2	2	Each 1	4	2	2

2. How to Assemble

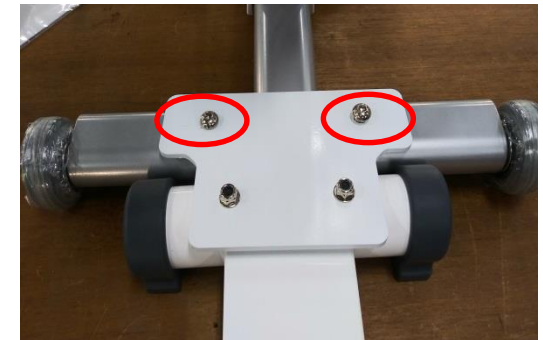
SP-1100



Remove the bolts by using an wrench



Place 36mm washer



Connect SP-1100 and SC-1100 with wrench bolts.

SC-1100



Connecting Bracket



Place the connecting bracket to SC-1100, and fix it with washer(4 points), nuts(2 pcs) and spanner(2pcs).

3. Caution

When you want to transfer the assembled device(SP-1100 +SC-1100), please make sure to disassemble them first.

It can cause a damage to the product.