

Extracorporeal Shockwave Therapy



ESWT

*Array
Piezo*

Focused shock wave
Radial pressure wave

IN-5200

Dual module type

ESWT (Focused shock wave + Radial pressure wave)

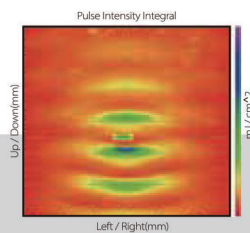
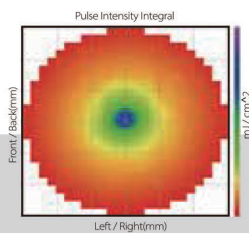
Extracorporeal Shock Wave Therapy in orthopaedics

Extracorporeal Shockwave Therapy (ESWT)

It is one of the representative non-surgical therapies which deliver extracorporeal shock wave precisely to the areas of joints or muscle damage for musculoskeletal disorders.

Characteristics of ESWT

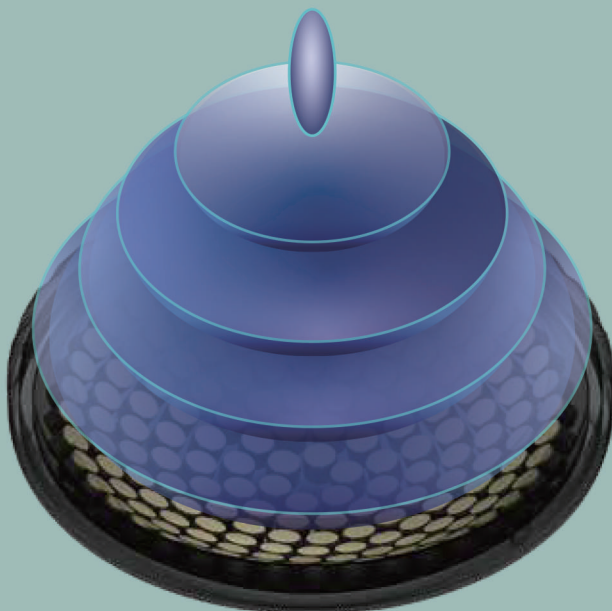
- Representative nonsurgical treatment.
- Can be applied to various parts.
- Leaves no scar, as there is no incision
- Have fewer side-effects due to extracorporeal approach of the therapy
- Short treatment time
- Allows treatment without hospitalization.
- Speeds up the natural healing process.
- High stability even under repeated treatment.



Safety

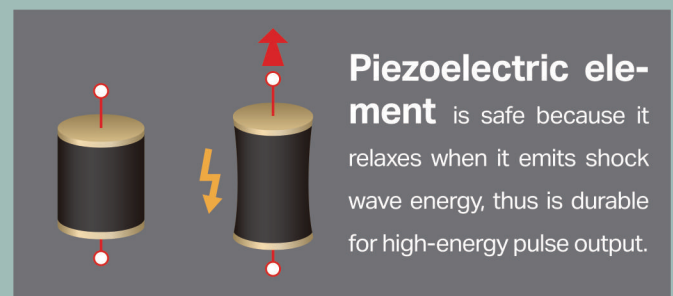
High accuracy

Easy to Use



Array type PIEZO

Consists of about 200 piezoelectric elements to deliver the correct amount of energy by collecting the shock waves generated from each shock wave energy element in one place.



ESWT Array Piezo

FOCUSED ESWT + RADIAL ESWT

Precise and stable, special ESWT



➤➤ Focused shock wave

Piezoelectric-type, a focus-type, safely and precisely delivers instantaneous and regular shock wave energy which targets deep lesions and calcified tissues.

➤➤ PIEZO FOCUSED ESWT + RADIAL ESWT

ESWT IN-5200 is an ESWT device that can use both PIEZO FOCUSING and RADIAL shock waves, and delivers shock wave safely and precisely to the musculoskeletal lesion.

➤➤ High-tech shock wave focusing device design

It provides safe treatment environment with piezoelectric element array mounting technology that combines Young-In's unique technology on the surface of reverse hemispherical shape produced by ultra-precision processing for 1 point focusing and high-tech focusing device that removes noise of frequency for safe and precise targeting.

➤➤ Safe and convenient ergonomic design

ESWT IN-5200 consists of safe and convenient dedicated cart and product body, and it is optimized for storage and loss prevention using storage space inside dedicated cart to provide a comfortable treatment environment for users.



➤➤ Shock wave energy fine-tuning control system

Shock wave energy is transmitted regularly and reliably.
Energy level, frequency adjustment

➤➤ 10.1 inch touch screen

Easy one-touch built-in function

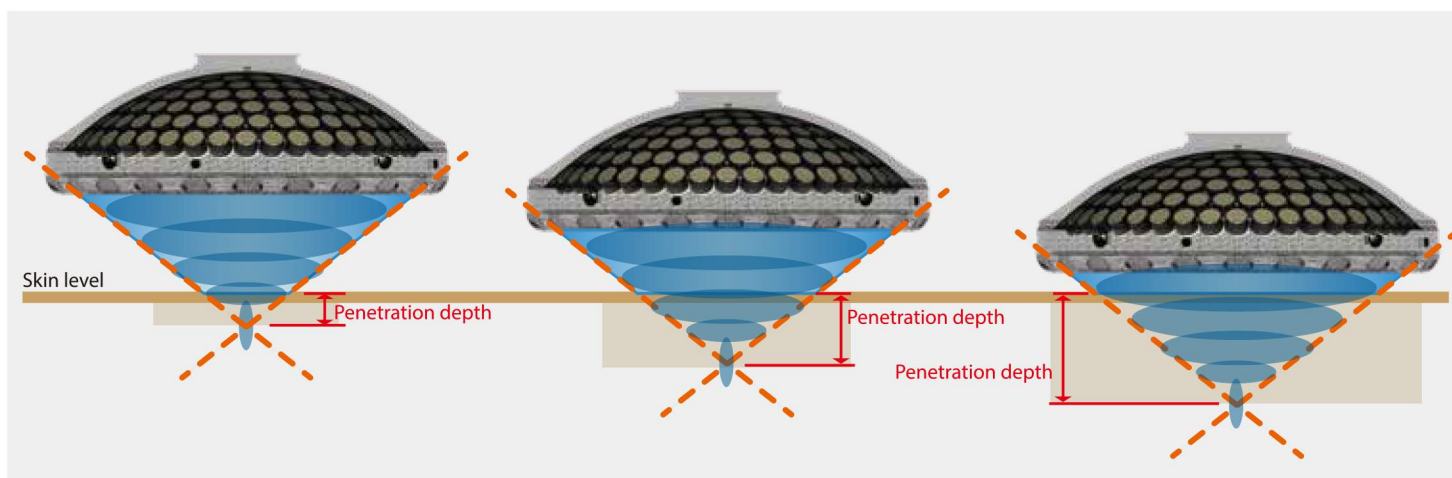
➤➤ Convenient EZ Mode Function

Direct control of parameters for treatment
Individually change, and set program update function
Image of treatment site selection and set protocol function

➤➤ Convenient footswitch

The ESWT handpiece is operated conveniently and maximized convenience to focus on the treatment.

Penetration depth of focused shock wave



It is suitable for safe and precise targeting treatment as it can adjust the treatment range and depth of treatment of shock wave energy.

Depending on the patient's symptoms, gel pads with different sizes of 10, 15, 20, 25, 30 and 40 mm can be

selected to deliver shock wave energy to the desired target depth for effective treatment. Depending on the site of treatment, the focus area of the source is set differently, utilizing more precise energy density to aid in accurate and safe treatment of the affected area.

EZ mode_special features of Array Piezo



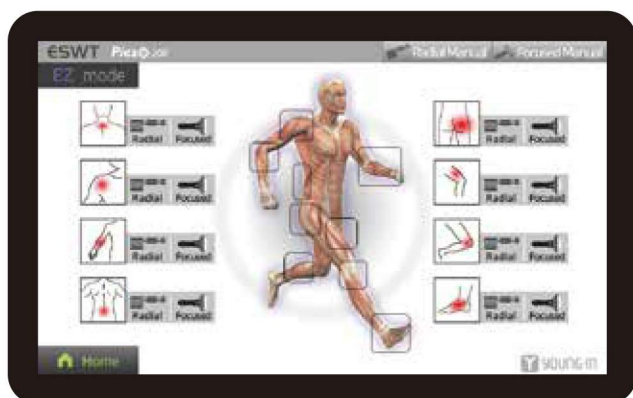
One-touch style using 10.1 inch color screen

EZ mode / FOCUSED mode / RADIAL mode

The EZ mode / Radial mode / Piezo focused shockwave can be easily selected according to the treatment target site.

Support Special EZ Mode

- Provides easy operation treatment environment
- Provided protocol set up with treatment site image
- Direct control of parameters for treatment
- Individually changeable program save update function
- Provide various utilization services
- Treatment protocol setting save function
- Easy treatment frequency setting function
- Energy output level control function
- Frequency control function



ESWT site-specific applicatorst

6EA in total _ 10 / 15 / 20 / 25 / 30 / 40 mm



Neck

Used for the treating pain around the disc and neck muscles. Depending on the depth, use 10, 15 applicator gel pads which suit your pain area.



Shoulder

Used for the treating frozen shoulders, rotator cuffs damage and calcific tendinitis. Use applicator gel pads 15, 20, and 25 which suit your pain area.



Elbow

Used for treating tennis elbows, golfer's elbows, and others. Use 10, 15 applicator gel pads according to the pain area.



Hip

Used for treating inflammation and pain in the hips, hips and thighs. Depending on the depth of treatment area, select 30, 40 applicator gel pads according to the pain area.



Knee

Used for treating acute diseases such as patellar tendonitis, meniscus cartilage damage, myalgia and inflammation in the tissues around the joints. Use applicator gel pads 10 and 15 according to the pain area.



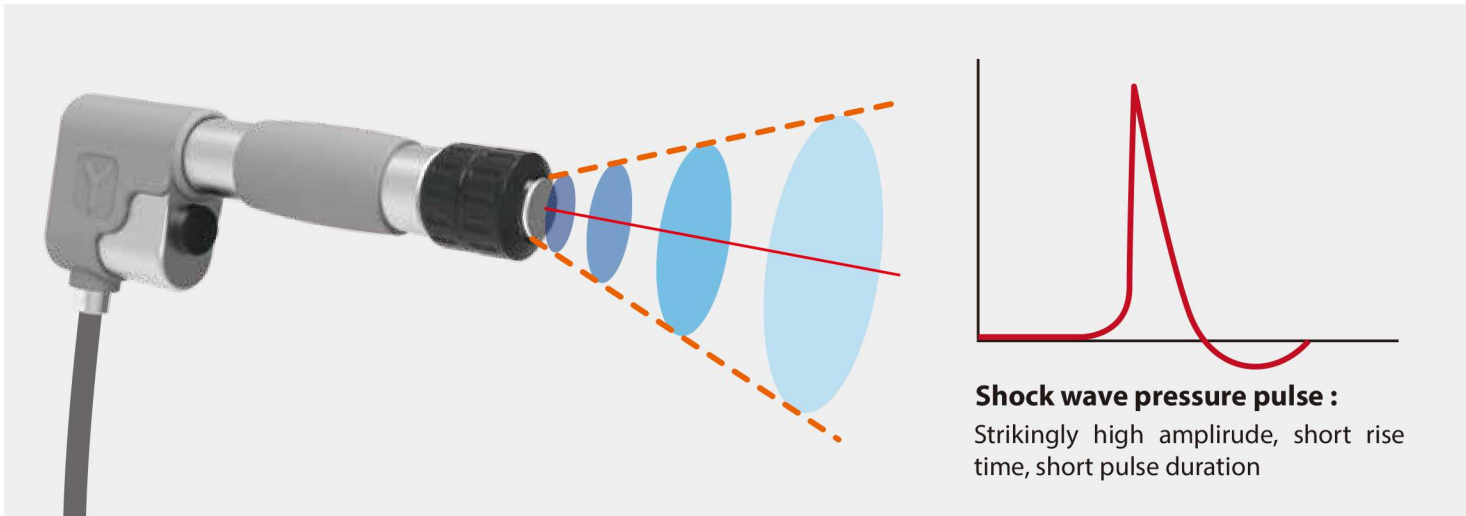
Foot

Used for treating pain such as plantar fasciitis, achilles tendonitis, and ankle joint pain. Select applicator gel pads 10 or 20 according to the pain area.



Radial pressure wave

ESWT IN-5200 Radial is a radial shock wave therapy device that delivers the energy generated by the shock wave system to the tissues of the human body through the delivery device. Shock wave energy is generated by the contact of the propellant and the applicator that is fired by the compressed air. It is an advanced non-surgical treatment method that delivers this shock wave energy from the outside of the body to the desired treatment area.



Features for operator

- **Precise and Stable Shockwave Energy**
Radial-type wide focus range delivers shock wave energy stably and precisely to tendons and large muscles.
- Wide frequency range / Fine adjustment output level
- **Selected low noise motor method**
The high-tech radial, subminiature, and low noise motor system provides stability and comfortable treatment environment.
- **With hand piece special vibration proof system**
Soft silicon is applied to minimize vibration and provide user convenience and optimal function.

Prove of Array Piezo : Radial pressure wave

Various multifocal applicators (15mm, 20mm, 35mm)

3 applicators are selected according to the purpose and range of treatment, and the treatment range and depth are adjusted to deliver effective shock wave energy.



Trigger point shock wave therapy



Neck

According to the depth of pain / pain, such as neck fascia, select applicator '15' and use appropriately.



Shoulder

According to the depth of pain / pain area such as rotator cuff injury, select applicator '20' and used appropriately.



Elbow

According to the depth of pain / pain area such as golfer elbow and tennis elbow, select applicator '15' and use appropriately.



Hip

According to the depth of the pain / pain area, such as osteoarthritis, select applicator '20' or '35' and use appropriately.



Knee

According to the depth of the pain / pain area, such as patellar tendonitis, select applicator '15' or '20' and use appropriately.



Foot

According to the depth of the pain / pain area, such as plantar fasciitis, Achilles tendonitis, select applicator '15' or '20' and use appropriately.



**Array
Piezo**

Model / Product	IN-5200 (Dual module type) / Extracorporeal shock wave therapy
Protection type and degree of protection against rated voltage	Class 1 ME equipment, BF type applied part
Product Performance	Array Piezo Frequency : 1~10Hz / Energy density: 0.07 ~0.82mJ/mm ² / Count : 10~5000shocks (Adjust 10 shocks) / Kind of Applicator : 10, 15, 20, 25, 30, 40mm
	Radial Frequency : 1~15Hz / Maximum air pressure : 4.0 bar / Count : 10~5000shocks(Adjust 10 shocks) / Kind of Applicator : 15, 20, 35mm
Product composition	Main Body/ Radial Handpiece / Array Piezo Handpiece/ Radial Applicator 3EA/Air Cylinder 1EA/ Array Piezo Applicator 6EA/ Foot Switch/ Power Code
Power and Power Consumption	220V, 60 Hz 200VA
Product Size	541 mm(W) x 506 mm(D) x 229 mm(H) / 30kg



YOUNG-IN bio tech

394 Nambusunhwan-ro, Yangcheon-gu,
Seoul, Republic of Korea(198-5, Sinwol-dong)
T. 82-2-3663-8329 F. 82-2-2699-8328

www.young-inBT.com